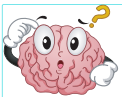
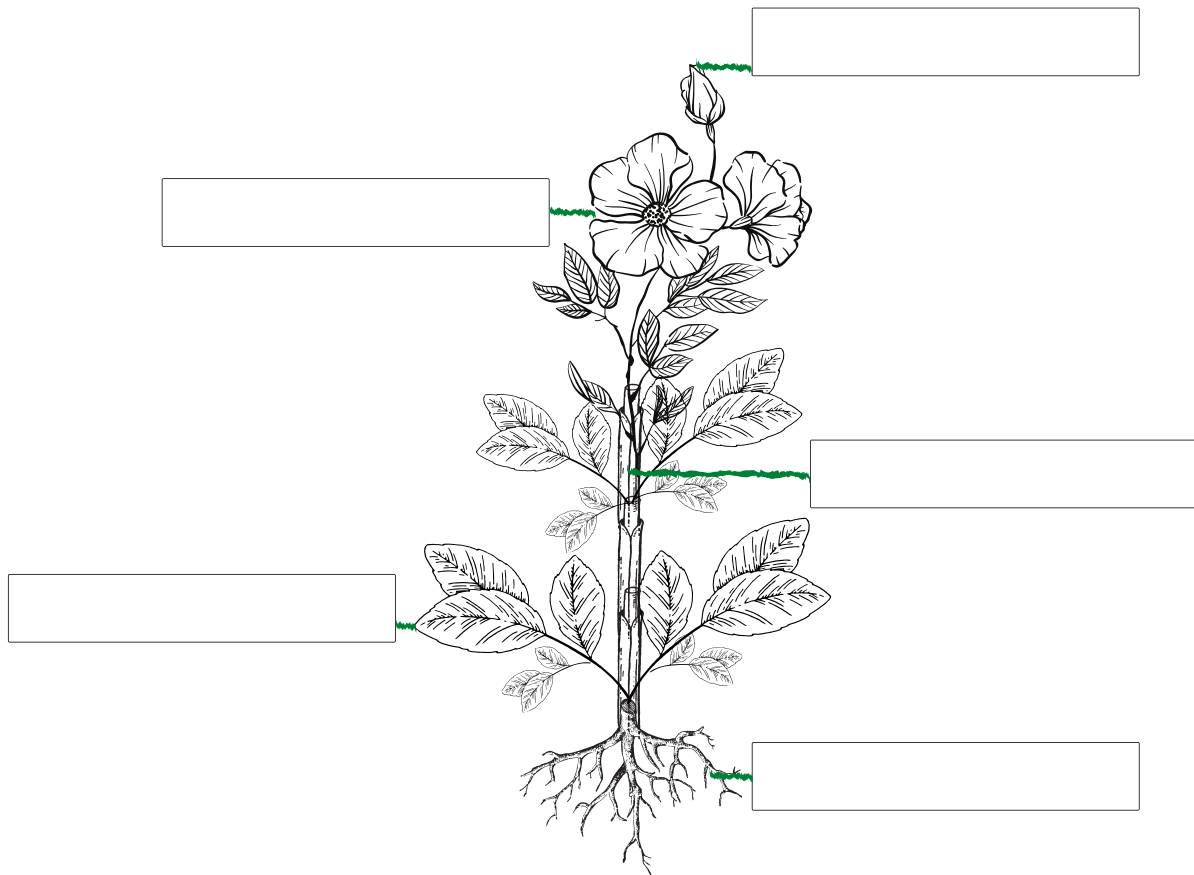


# Parts of a Plant



- Label the parts of the flower by unscrambling the letters



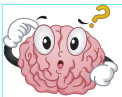
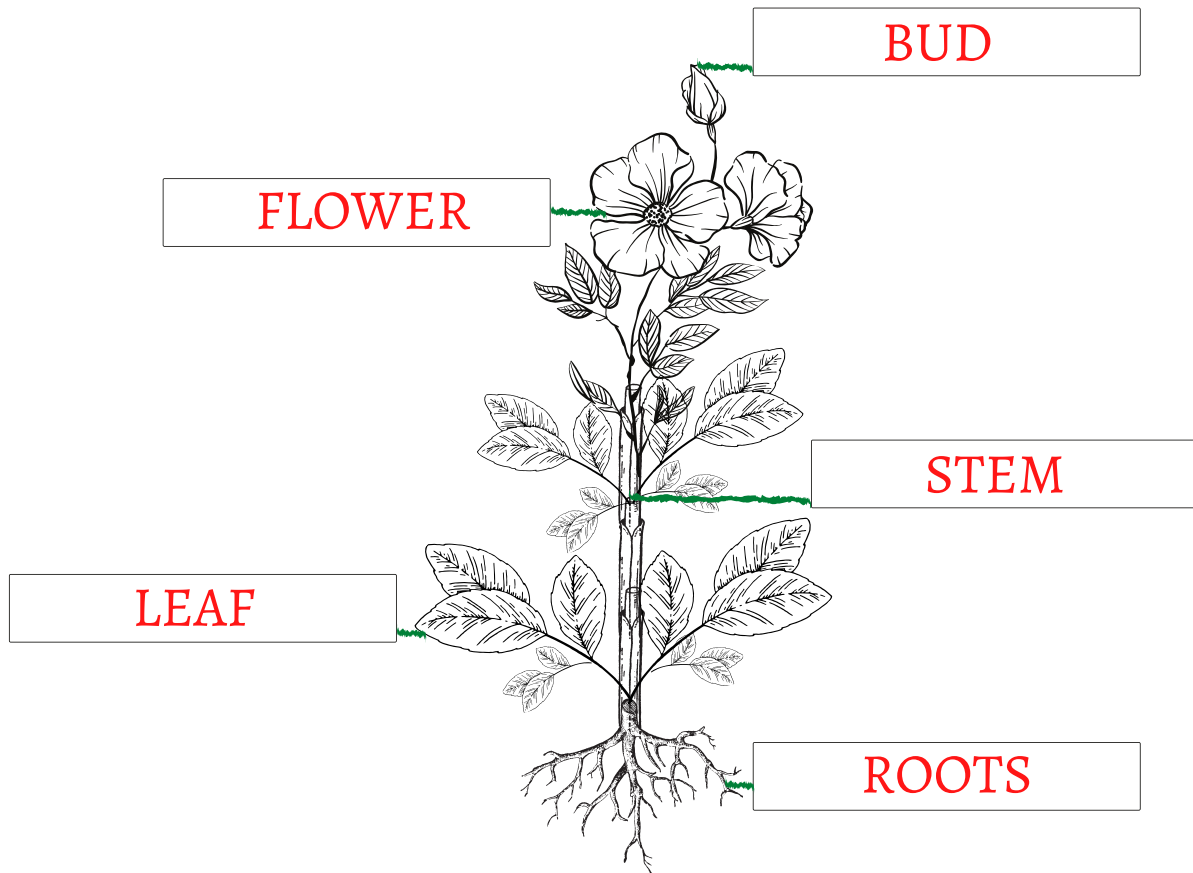
- tmes
- wlfroe
- ortso
- dub
- flea



# Parts of a Plant



## ANSWER KEYS



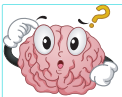
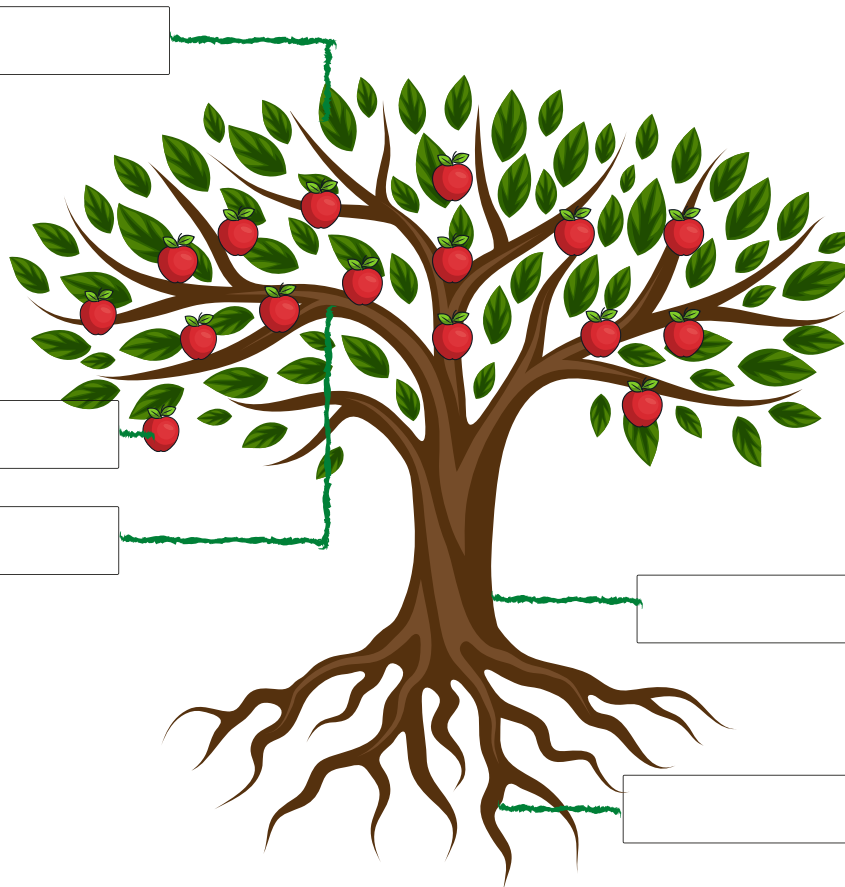
- tmes
- wlfroe
- ortso
- dub
- flea



# Parts of a Plant



- Label the parts of the tree by unscrambling the letters



- rabchn
- torso
- elaf
- kturn
- tiurf



# Parts of a Plant



## ANSWER KEYS

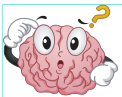
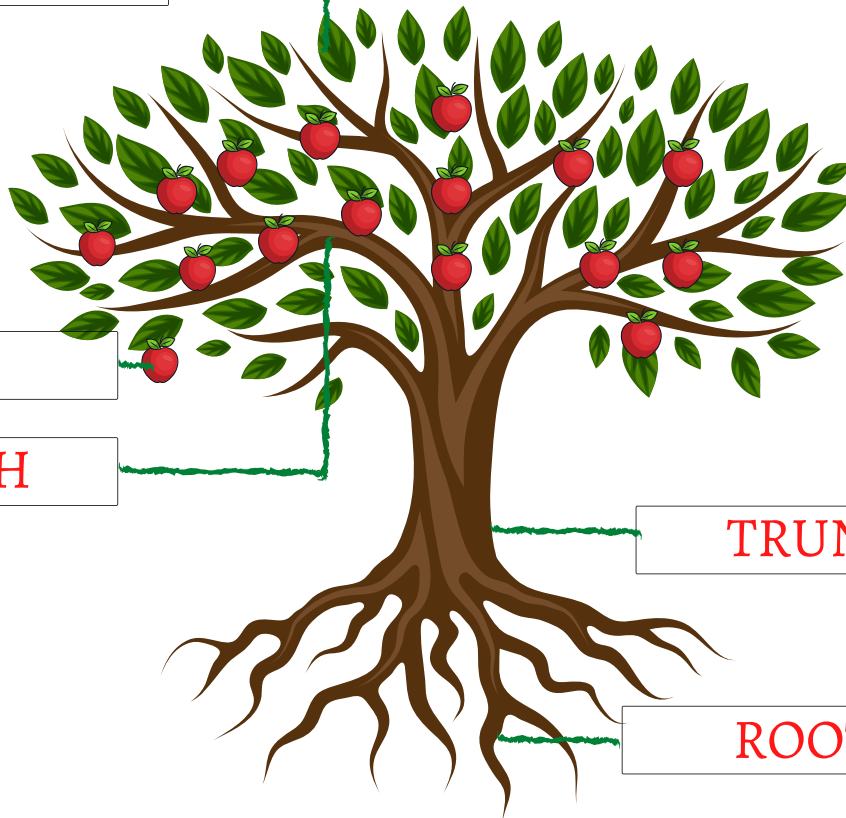
LEAF

FRUIT

BRANCH

TRUNK

ROOTS



- rabchn
- torso
- elaf
- kturn
- tiurf



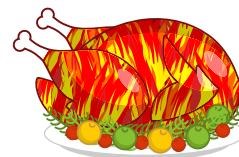
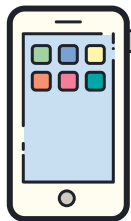
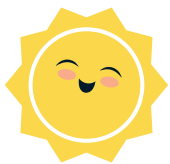
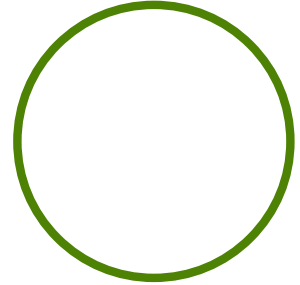
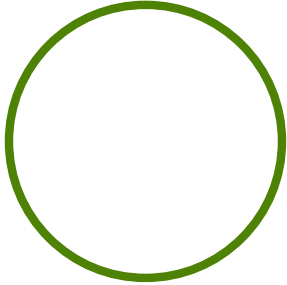
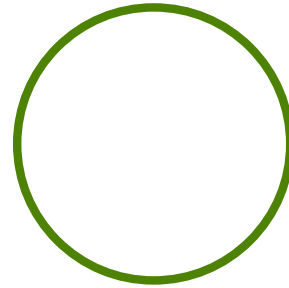
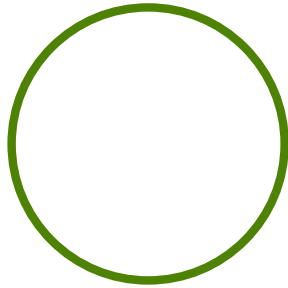
# Plant



- What does the plant need in order to grow



Draw four needs of plant in order to grow

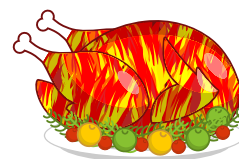
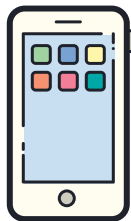
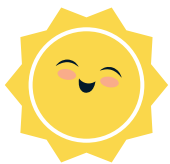


# Plant



## ANSWER KEYS

Draw four needs of plant in order to grow



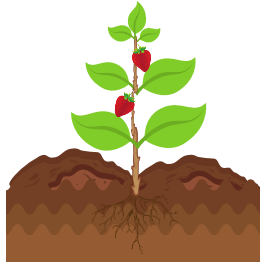
# Stages of a Plant



Label each step in correct order  
of the plant's life cycle



Fruit plant flower sprout seed




# Stages of a Plant



## ANSWER KEYS



Fruit plant flower sprout seed



Seed

1



Fruit

5



Sprout

2



Flower

4



Plant

3